

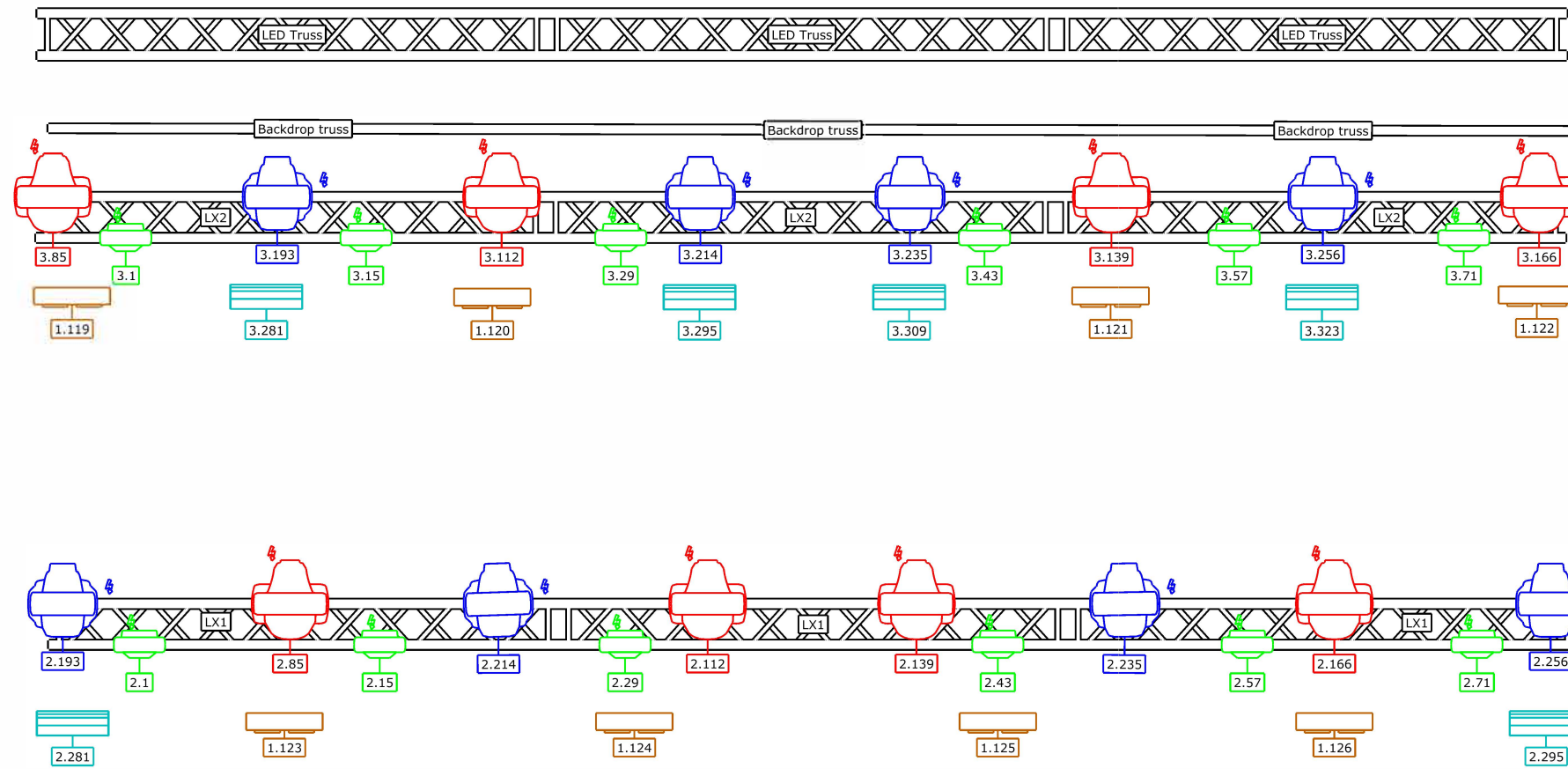


FOYN HAGEN
Sommer i Tønsberg









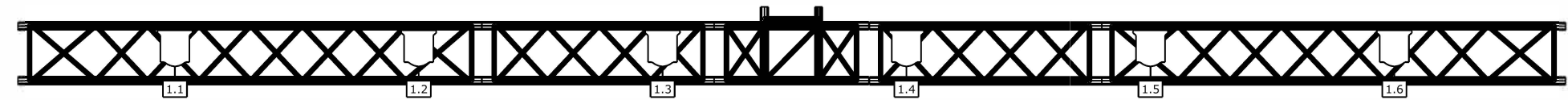





FOYNHAGEN
Sommer i Tønsberg

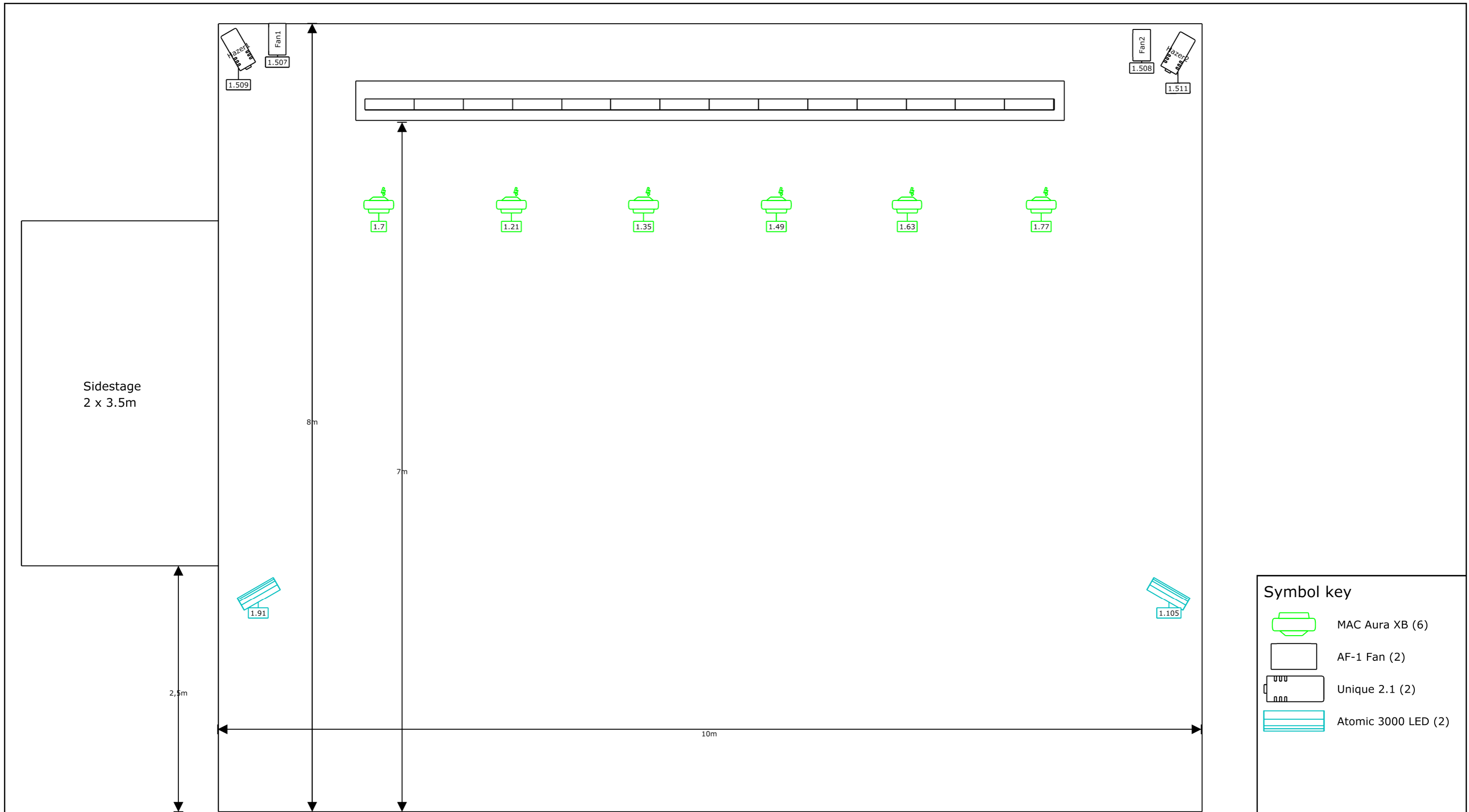


Symbol key

-  MAC Aura XB (12)
-  Rush MH 7 Hybrid (8)
-  Stage Blinder 2 DMX (8)
-  MAC Quantum Profile (8)
-  Arri T2 2000W Location Fresnel (6)
-  Atomic 3000 LED (6)



| | | | | | | | |
|--------------------|----------------|------------------|----------|---|---|---|-----------------|
| Project | Foynhagen 2024 | Project location | Tønsberg | Project date | 2024 Season | Drawing author | Drawing version |
| Lighting designer | Rune Langaard | | |  |  |  | |
| Set designer | | | | | | | |
| Director | | | | | | | |
| Technical director | | | | | | | |



| Symbol key | |
|------------|---------------------|
| | MAC Aura XB (6) |
| | AF-1 Fan (2) |
| | Unique 2.1 (2) |
| | Atomic 3000 LED (2) |

| | | | | |
|------------------------------------|--------------------------------------|-----------------------------|----------------|-----------------|
| Project Foyenhagen 2024 | Project location Tønsberg | Project date 2024 Season | Drawing author | Drawing version |
| Lighting designer Rune Langaard | Stage Height = 145cm Trim = 4.15m | | | |
| Set designer | | | | |
| Director | | | | |
| Technical director | | | | |



Foynhagen 2024 Fixture report

2024 Season Tønsberg

Fixtures

| Name | Patch | Mode | Location | Purpose | Note | Weight | Rating |
|-------------------------------------|-------|------------|-------------|-------------------------|------|----------|--------|
| Martin MAC Aura XB | 1.7 | Standard | Floor | Floorpack or sidelights | | 6kg | 349W |
| Martin MAC Aura XB | 1.21 | Standard | Floor | Floorpack or sidelights | | 6kg | 349W |
| Martin MAC Aura XB | 1.35 | Standard | Floor | Floorpack or sidelights | | 6kg | 349W |
| Martin MAC Aura XB | 1.49 | Standard | Floor | Floorpack or sidelights | | 6kg | 349W |
| Martin MAC Aura XB | 1.63 | Standard | Floor | Floorpack or sidelights | | 6kg | 349W |
| Martin MAC Aura XB | 1.77 | Standard | Floor | Floorpack or sidelights | | 6kg | 349W |
| Martin Atomic 3000 LED | 1.91 | 14 Channel | Floor | Floorpack | | 7,8kg | 790W |
| Martin Atomic 3000 LED | 1.105 | 14 Channel | Floor | Floorpack | | 7,8kg | 790W |
| Martin AF-1 Fan | 1.507 | Standard | Floor | | | 10kg | 120W |
| Martin AF-1 Fan | 1.508 | Standard | Floor | | | 10kg | 120W |
| Look Solutions Unique 2.1 | 1.509 | Standard | Floor | | | 8,7kg | 1,5KW |
| Look Solutions Unique 2.1 | 1.511 | Standard | Floor | | | 8,7kg | 1,5KW |
| Arri Arri T2 2000W Location Fresnel | 1.1 | Control | Front Truss | Fronts | | 7kg | 2kW |
| Arri Arri T2 2000W Location Fresnel | 1.2 | Control | Front Truss | Fronts | | 7kg | 2kW |
| Arri Arri T2 2000W Location Fresnel | 1.3 | Control | Front Truss | Fronts | | 7kg | 2kW |
| Arri Arri T2 2000W Location Fresnel | 1.4 | Control | Front Truss | Fronts | | 7kg | 2kW |
| Arri Arri T2 2000W Location Fresnel | 1.5 | Control | Front Truss | Fronts | | 7kg | 2kW |
| Arri Arri T2 2000W Location Fresnel | 1.6 | Control | Front Truss | Fronts | | 7kg | 2kW |
| Showtec Stage Blinder 2 DMX | 1.123 | Control | LX1 | | | 2kg 960g | 1,3KW |
| Showtec Stage Blinder 2 DMX | 1.124 | Control | LX1 | | | 2kg 960g | 1,3KW |
| Showtec Stage Blinder 2 DMX | 1.125 | Control | LX1 | | | 2kg 960g | 1,3KW |
| Showtec Stage Blinder 2 DMX | 1.126 | Control | LX1 | | | 2kg 960g | 1,3KW |
| Martin MAC Aura XB | 2.1 | Standard | LX1 | | | 6kg | 349W |

| | | | | | |
|-----------------------------|-------|-----------------|-----|----------|-------|
| Martin MAC Aura XB | 2.15 | Standard | LX1 | 6kg | 349W |
| Martin MAC Aura XB | 2.29 | Standard | LX1 | 6kg | 349W |
| Martin MAC Aura XB | 2.43 | Standard | LX1 | 6kg | 349W |
| Martin MAC Aura XB | 2.57 | Standard | LX1 | 6kg | 349W |
| Martin MAC Aura XB | 2.71 | Standard | LX1 | 6kg | 349W |
| Martin MAC Quantum Profile | 2.85 | 16-Bit Extended | LX1 | 23,2kg | 750W |
| Martin MAC Quantum Profile | 2.112 | 16-Bit Extended | LX1 | 23,2kg | 750W |
| Martin MAC Quantum Profile | 2.139 | 16-Bit Extended | LX1 | 23,2kg | 750W |
| Martin MAC Quantum Profile | 2.166 | 16-Bit Extended | LX1 | 23,2kg | 750W |
| Martin Rush MH 7 Hybrid | 2.193 | Standard | LX1 | 24kg | 372W |
| Martin Rush MH 7 Hybrid | 2.214 | Standard | LX1 | 24kg | 372W |
| Martin Rush MH 7 Hybrid | 2.235 | Standard | LX1 | 24kg | 372W |
| Martin Rush MH 7 Hybrid | 2.256 | Standard | LX1 | 24kg | 372W |
| Martin Atomic 3000 LED | 2.281 | 14 Channel | LX1 | 7,8kg | 790W |
| Martin Atomic 3000 LED | 2.295 | 14 Channel | LX1 | 7,8kg | 790W |
| Showtec Stage Blinder 2 DMX | 1.119 | Control | LX2 | 2kg 960g | 1,3KW |
| Showtec Stage Blinder 2 DMX | 1.120 | Control | LX2 | 2kg 960g | 1,3KW |
| Showtec Stage Blinder 2 DMX | 1.121 | Control | LX2 | 2kg 960g | 1,3KW |
| Showtec Stage Blinder 2 DMX | 1.122 | Control | LX2 | 2kg 960g | 1,3KW |
| Martin MAC Aura XB | 3.1 | Standard | LX2 | 6kg | 349W |
| Martin MAC Aura XB | 3.15 | Standard | LX2 | 6kg | 349W |
| Martin MAC Aura XB | 3.29 | Standard | LX2 | 6kg | 349W |
| Martin MAC Aura XB | 3.43 | Standard | LX2 | 6kg | 349W |
| Martin MAC Aura XB | 3.57 | Standard | LX2 | 6kg | 349W |
| Martin MAC Aura XB | 3.71 | Standard | LX2 | 6kg | 349W |
| Martin MAC Quantum Profile | 3.85 | 16-Bit Extended | LX2 | 23,2kg | 750W |
| Martin MAC Quantum Profile | 3.112 | 16-Bit Extended | LX2 | 23,2kg | 750W |
| Martin MAC Quantum Profile | 3.139 | 16-Bit Extended | LX2 | 23,2kg | 750W |
| Martin MAC Quantum Profile | 3.166 | 16-Bit Extended | LX2 | 23,2kg | 750W |

| | | | | | |
|-------------------------|-------|------------|-----|-----------|-----------|
| Martin Rush MH 7 Hybrid | 3.193 | Standard | LX2 | 24kg | 372W |
| Martin Rush MH 7 Hybrid | 3.214 | Standard | LX2 | 24kg | 372W |
| Martin Rush MH 7 Hybrid | 3.235 | Standard | LX2 | 24kg | 372W |
| Martin Rush MH 7 Hybrid | 3.256 | Standard | LX2 | 24kg | 372W |
| Martin Atomic 3000 LED | 3.281 | 14 Channel | LX2 | 7,8kg | 790W |
| Martin Atomic 3000 LED | 3.295 | 14 Channel | LX2 | 7,8kg | 790W |
| Martin Atomic 3000 LED | 3.309 | 14 Channel | LX2 | 7,8kg | 790W |
| Martin Atomic 3000 LED | 3.323 | 14 Channel | LX2 | 7,8kg | 790W |
| | | | | 651kg 80g | 47kW 218W |